

Applications:

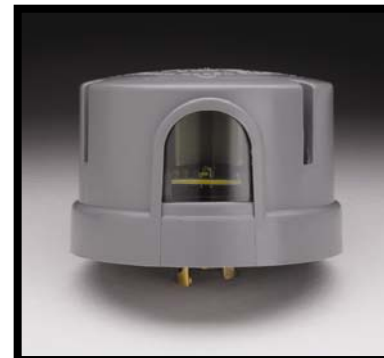
- Roadway & Area Lighting
- Areas with variable sky conditions

Design Details

- Filtered Silicon Light Sensor
- Custom Designed Sealed Relay
- MOV Rated for 320 Joule/9500 Amp
- Neoprene Base Gasket has a continuous use temperature of 105°C
- Built In 2 – 5 second turn-off delay
- Selectable Cover Color
- Polypropylene Cover
- Brass Legs
- Not approved for use on LED fixtures

Regulatory Listings

- ANSI C136.10-1996 Compliant
- ROHS compliant



Operating Characteristics

- Voltage 105 to 530 VAC, 50/60Hz
- Load rating: 1000 watts, 1800 VA ballast
- -40 to +70°C ambient

ADDITIONAL FEATURES

Spectral Response The filtered silicon light sensor provides a response to light that approximates the human eye

Six Year Warranty: The DE series controls are warranted to be free of manufacturing quality defects for a period of (6) years from the date of sale.

The Power-Up Delay option prevents the control from activating for 45-60 seconds after power is applied. This allows lamp warm-up time so the installer can verify the system is working properly. It also allows for the system to be easily tested in the future. When power is shut off and then reconnected (at the pole base) and the lamp turns on briefly and then turns off, it confirms that the control, fixture, lamp and voltage supply are working correctly.

ORDERING INFORMATION

Example: DE120 1.5 TJPDBK J50

Series Code & Voltage	Turn-on Level (ftc)	Time Delay/ Surge Protection	Power-Up Delay	Cover Color (See Chart)	Package Qty.
DE120 120 Volts (105-130)	1.0 Energy Saver	TJ 2 – 5 Sec. Turn-Off Delay 320J/9500 Amp MOV	(blank) Std. Operation PD 45 – 60 Sec. Delay	(blank) ANSI Std. Color BK Black BR Brown	J12 12 Units J50 50 Units
DE124 120/240/277 Volts (105-305)	1.5 ANSI Standard 2.6 IES Recommendation				
DE347 347 Volts (300-400)	8.0 Metro – High Ambient				
DE480 480 Volts (420-530)	35 FAA				

ANSI Color Codes	
120V	Gray
240V	Maroon
Multi-Volt	Dark Blue
347V	Green
480V	Yellow

